



# MONTHLY MEMBERSHIP PROGRESS REPORT

District 2 T3

Results as of: 02/28/2018

GMT: JOE AL PICONE

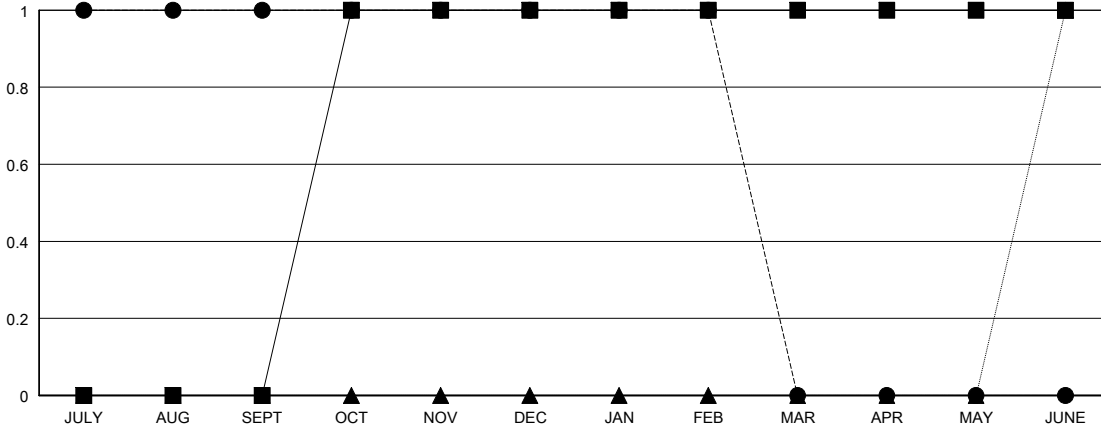
LOCATION TEXAS

GMT CA

Clubs			
RESULTS FOR 2017-2018			
QUARTER	NEW CLUB GOAL	NEW CLUBS	DROPPED CLUBS
JULY/AUG/SEPT	0	1	0
OCT/NOV/DEC	1	0	0
JAN/FEB/MAR	0	0	0
APR/MAY/JUNE	0	0	0

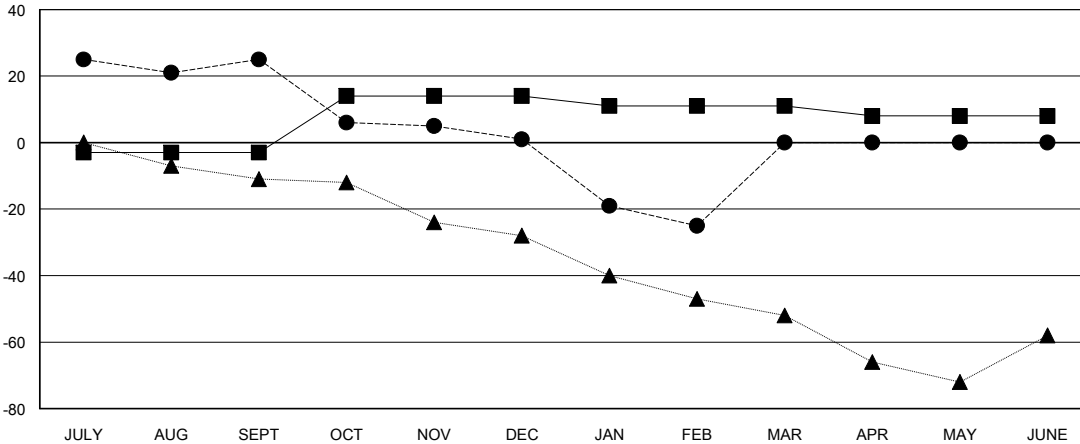
Members			
RESULTS FOR 2017-2018			
QUARTER	MEMBER GROWTH NET GOAL	MEMBER GROWTH ACTUAL	DROPPED MEMBERS ACTUAL (including transfers)
JULY/AUG/SEPT	-3	80	49
OCT/NOV/DEC	17	18	40
JAN/FEB/MAR	-3	16	36
APR/MAY/JUNE	-3	0	0

GOALS AND ACTUAL NEW CLUBS CUMULATIVE



- - CURRENT YEAR GOALS FOR NEW CLUBS
- - CURRENT YEAR ACTUAL NEW CLUBS
- ▲ - LAST YEAR ACTUAL NEW CLUBS

GOALS AND ACTUAL MEMBERS CUMULATIVE



- - MEMBER GROWTH NET GOAL
- - MEMBER GROWTH ACTUAL
- ▲ - LAST YEAR MEMBERSHIP ACTUAL

DROPPED CLUBS: 0
------------------

17 CLUBS OF 33 ADDED 1 OR MORE NEW MEMBERS

GENDER DISTRIBUTION	
MALE	427 (59.22%)
FEMALE	294 (40.78%)
Women Percentage Fiscal Year Goal: 30%	

DROPPED MEMBERS	
DECEASED	8
CLUB CANCELLED	0
OTHER	117
<b>TOTAL</b>	<b>125</b>

[CLICK HERE FOR CUMULATIVE MEMBERSHIP DATA](#)

TOTAL FAMILY UNIT MEMBERS	98
FAMILY MEMBERS PAYING HALF DUES	51